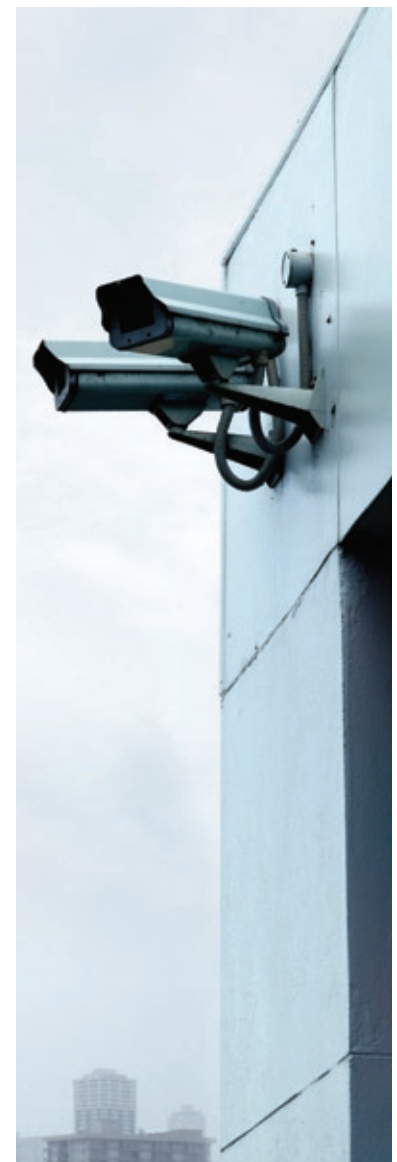


# In an Increasingly Security-Conscious World, Seeing is Protecting.



IP-based video surveillance is transforming the way organizations, municipalities and institutions are protecting their property, personnel and proprietary assets. Motorola's proven Canopy<sup>®</sup> wireless technology helps you see substantial increases in safety and security quickly and affordably.



# Higher Levels of Security are in Sight

The way the world has changed is altering the way we look at security. Virtually every organization, municipality, institution and business has made security one of its highest priorities. In addition, government regulations are mandating higher levels of security across the board. The investments allocated to providing premises and property protection, personal safety, systems security and public safety are growing exponentially.

## The Technology of Security

The technology of security is changing, too. Demand for real-time sight-based monitoring is rising dramatically, and it's no wonder. For a variety of applications—including perimeter monitoring, access control, public and individual safety and more—video surveillance systems are rapidly becoming the technology of choice for a wide range of customers.

## IP-Based Video Surveillance

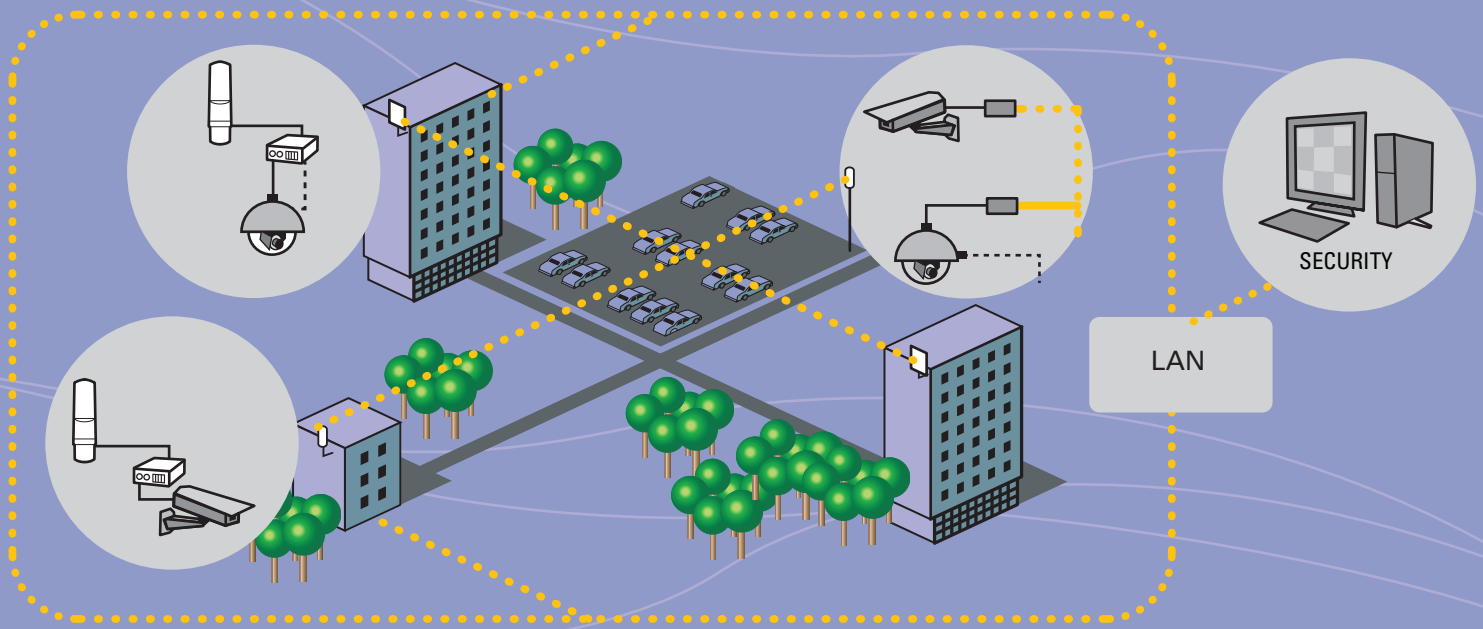
At the same time, IP-based video technology and solutions have become the new standard of excellence in video surveillance and situational awareness. Compared to analog or hybrid systems, IP-based solutions provide a number of crucial advantages, including:

- **Faster Awareness and Response.** IP-based intelligent technology provides the gold standard of real-time situational awareness, allowing for virtually instantaneous problem recognition, faster response and more successful resolution of security issues.
- **Lower Cost.** Wireless IP-based security solutions are faster and less costly to deploy because there is no digging, wiring or cabling necessary. Equally important, they're less costly to implement. For example, the monthly savings you can realize by eliminating T1 lines are substantial.
- **Leverage Existing Investments.** IP-based technology is compatible with existing analog or hybrid video surveillance systems, so you can extend and improve your current network without the hassle and expense of having to start over.
- **Smart Hardware and Software.** New, IP-based smart technology and cameras combine with intelligent software solutions to improve performance and maximize protection.
- **Optimized ROI.** IP-based video surveillance technology is also revolutionizing return on investment by lowering costs, improving efficiency, and most important, maximizing security for people and property.
- **Remote Monitoring.** To help you centralize monitoring operations, IP-based video surveillance solutions enable you to monitor multiple cameras from a single remote location.
- **Enhanced Security.** IP-based video surveillance systems enable digital images to be encrypted for maximum security.

## Beyond Surveillance: Other IP-Based Video Applications.

New IP-based video technologies are also revolutionizing the way many organizations work. For example, you can help schools and higher educational institutions use video systems to offer students and faculty the convenience of distance learning programs. You can help healthcare providers save lives by facilitating telemedicine through real-time image transmission and other applications. And you can help your business partners use video conferencing to increase efficiency and save on travel expenses.

# Video Surveillance Network



## Migrating from a Legacy Network?

If you're planning to migrate from a legacy video surveillance system to an IP-based configuration, Canopy flexibility supports the migration strategy that best suits your needs. Are you moving from an analog or hybrid system? Canopy can be seamlessly integrated into either. Are you on a fast track or have you adopted a more gradual approach? Whatever your requirements, Canopy allows you to protect your current investments while you move to a fully digital IP-based video surveillance system that helps maximize security throughout your organization.

## Motorola's IP-Based Technology Enables Reliable, Cost-Effective Video Surveillance Solutions.

With extensive deployment of advanced solutions for fixed and portable broadband access, Motorola is helping lead the way to heightened security around the world. The Canopy® platform—part of the MOTOwi4™ portfolio of next generation wireless broadband solutions—serves as a cost-effective, reliable backbone infrastructure for transporting any type of video, sound or data IP surveillance traffic. This includes sensors, optical trip wires, perimeter radar systems, biometrics and RFID systems.

- **Proven Reliability.** The Canopy Platform is a robust, high-speed wireless solution now successfully deployed in more than 100 countries. Canopy equipment powers a multitude of reliable video surveillance networks in the U.S. and around the globe.
- **Configuration Flexibility.** The Motorola wireless broadband system offers a variety of configuration options that include the point-to-point series of wireless Ethernet bridges, Canopy point-to-multipoint Access Points and Subscriber Modules and mesh WiFi networks. Canopy is also compatible with legacy analog or hybrid video surveillance networks.
- **Scalability.** Canopy technology provides

highly scalable solutions that allow you to start small—with exceptionally affordable entry costs—and expand as security demands grow.

- **Interference Resistance.** With its patented signaling technique, the Canopy system provides an industry leading low Carrier-to-Interference (C/I) ratio. Its unique signal synchronization also offers a high-level of tolerance to self-interference
- **Bandwidth Capabilities.** Canopy supports the bandwidth intensive and latency sensitive requirements of video data. In addition, Prizm, the MOTOwi4 Element Management System (EMS), provides bandwidth management that enables crucial prioritization of bandwidth for video surveillance and other security traffic.
- **Faster Deployment.** Unlike non-wireless solutions, Canopy requires no costly, time-consuming digging, cabling and wiring to build or expand a network. A Canopy video surveillance network or extension can be installed easier and faster than virtually any other option.

In addition, Motorola offers you the expertise we've amassed in more than 75 years of wireless technology and networking leadership. We

# Monitoring Video Surveillance Around the World

## **Sergano, Italy: "It's like having another police officer."**

Sergano is a small Italian town of about 3,000 residents. In spite of its small size, its two full-time police officers are always very busy, and so the decision was made to set up a video surveillance system to help monitor activities throughout the municipality. The closed-circuit television (CCTV) system is supported by Motorola's Canopy broadband wireless network. It's been so effective in reducing crimes such as vandalism, that the system is estimated to pay for itself in just 12 months.

## **U.S. Port Complex: "15 miles of enhanced security."**

A large commercial port complex in the northeastern United States needed to enhance its security monitoring operations over three ports across a 15-mile area. The enhanced system had to be able to transmit video from more than 90 cameras to three security offices for 24/7 surveillance. Port security chose a Canopy wireless network integrated with smart cameras and intelligent software. The system was installed in less than 100 days at a significant cost savings over other options. Now video feeds are instantly accessible, not only to each of the three ports security operations, but also to law enforcement and emergency response centers.

## **Union Pacific Railroad: "The eyes of Remote Control Locomotives."**

Union Pacific Railroad has been using Remote Control Locomotives (RCL) in their switchyard operations since 2003. One consistent safety problem has been that when an RCL must cross a road in the yards, no one is inside the cab to visually monitor the crossing for activity. To solve the problem, UP placed cameras at each crossing, sending the visual data through its existing Canopy wireless network to a yard control center where ground personnel continually monitor each crossing for traffic.

## Connecting the Unconnected: The **MOTO**wi4 Portfolio

Motorola has been a global leader and innovator in wireless technology for over 75 years. Our expertise at "connecting the unconnected" has literally been proven all around the world. **MOTO**wi4™ is a portfolio of innovative wireless broadband solutions that create, complement and complete IP networks. Delivering IP coverage to virtually all spaces, the **MOTO**wi4 portfolio includes Fixed Broadband, WiMAX, Mesh and Broadband Over Powerline solutions for private and public networks.

For more information about Motorola's advanced IP-based video surveillance capabilities, contact your Motorola distributor, call us at 1.800.795.1530 or 1.866.515.5825 or visit us on the Web at [www.motorola.com/canopy](http://www.motorola.com/canopy).



**Motorola, Inc.** 1299 E. Algonquin Road, Schaumburg, Illinois 60196 U.S.A.

MOTOROLA and the stylized M Logo are registered in the U.S. Patent and Trademark Office. All other products or service names are the property of their registered owners.

© Motorola, Inc. 2006

